

Environmental Charter

The city of Pasadena elects to be an environmental advocate and a leader in environmental compliance and protection. The City shall cultivate superior environmental standards that will provide for sustainable municipal development.

The city recognizes that growth and opportunity cannot be conducted at the expense of environmental protection and enhancement, and that growth and environmental stewardship are intimately related.

The city believes that the implementation of an environmental ethic need not interfere with economic development, and that practicing such environmental ethic can ultimately be expected to enhance economic affairs and provide for responsible, farsighted development.

The city believes that the protection of the urban and natural environments is a social responsibility and a fundamental obligation of a democratic government, and that an ecologically impoverished and polluted environment adversely impacts human health.

The city is striving to become a model for environmental excellence and a prevailing force in environmental protection. To accomplish these goals, the City shall establish policies that will incorporate environmental responsibility into its daily management of urban and industrial growth, education, energy and water use, air quality, transportation, waste reduction, economic development, and open space and natural habitats.

Pasadena Water and Power

- PWP AnswerLine: (626) 744-6970
- Customer Relations: (626) 744-4154
- www.PWPweb.com

Public Works Department

- Recycling and Waste Reduction: (626) 744-4721
- recycle@cityofpasadena.net
- Trash Service: (626) 744-4087
- www.cityofpasadena.net/publicworks

Transportation

- Transit Planning and Operations: (626) 744-6470
- Pasadena ARTS Buses: (626) 744-4055
- www.cityofpasadena.net/trans



Printed on 30%
Post-Consumer Paper



Published by the
City of Pasadena 2005

THE GREEN REPORT

a conservation resource guide

pasadena green programs and sustainability efforts



Protecting Pasadena's Air, Water and Earth

How we care for Pasadena today is how we care for ourselves, our children and the future generations who will breathe Pasadena's air, walk its famous boulevards, drink the water and view the mountain skyline.

Yet our community is part of Los Angeles County, which ranks among the 10% worst counties, according to the U.S. Environmental Protection Agency, in the areas of major chemical release and waste generation.

The good news is we can all make a difference. Although there is still a lot of work to do, Pasadena's many conservation efforts have put our community at the forefront of environmental reform. A city as large and diverse as Pasadena must put conservation at the heart of its growth.

This booklet explains how you can take action and get involved in caring for our environment; and how your local government is working with you to put the right strategies and tools in place to protect our water, air and earth.

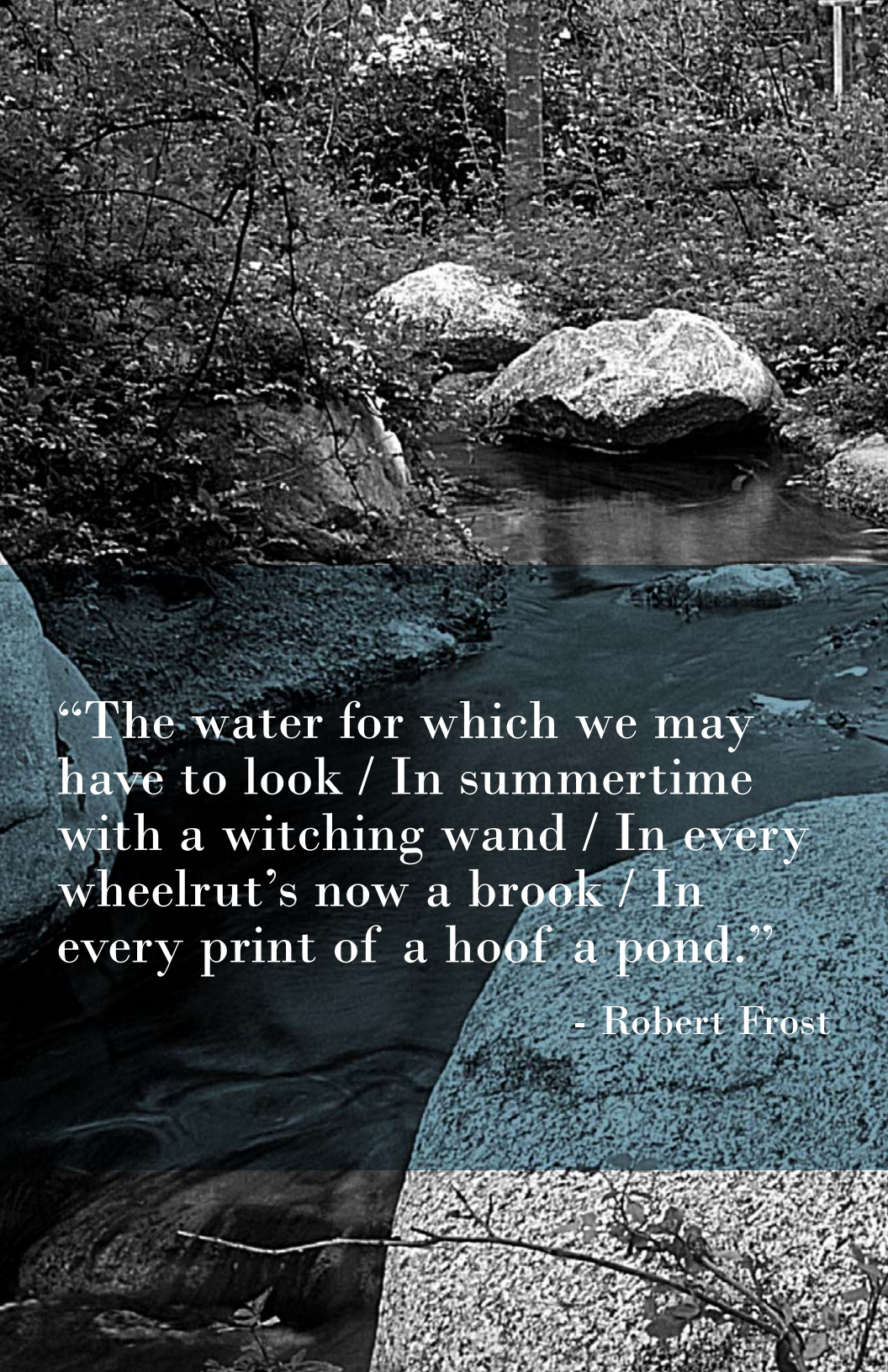
Call (626) 744-4000 or go to the City of Pasadena's official web site at www.cityofpasadena.net to find out more about Pasadena's conservation and recycling efforts.

“There is pleasure in the
pathless woods / there is
rapture in the lonely shore
/ there is society where
none intrudes / by the deep
sea, and music in its roar /
I love not man the less, but
nature more.”

- George Gordon Byron

Interesting factoid:

Research indicates that property values rise with the proximity to protected green space. (University of Georgia 2003)



“The water for which we may
have to look / In summertime
with a witching wand / In every
wheelrut’s now a brook / In
every print of a hoof a pond.”

- Robert Frost

Saving Pasadena's Water

Most of Pasadena's front lawns are green, so we're apt to forget we live in a semi-arid desert and sub-tropical climate. Since the lion's share of our water supply comes from other regions, we need to continually conserve water as a precious resource.

High Efficiency Clothes Washer Rebate

Pasadena Water and Power's \$200 rebate for purchasing a high efficiency washer goes a long way. A single residence can save 7,000 gallons of water per year. That's about half the water and energy usage of an old washer.

Ultra Low Flow Toilet Rebate and Dual-Flush Ultra Low Flow Rebate


You may be sitting on a gold mine! Pasadena residential customers can get an \$80 rebate for the purchase and installation of a two-button dual-flush ultra low flow toilet if it replaces a non ultra low flow toilet.

Water Conservation Resources and FAQs

You'll find conservation tips on general watering, sprinkler systems, pools and spas and household water conservation, among others, when you visit www.PWPweb.com and click on Your Water.

Interesting factoid:

Nearly 97% of the world's water is salty or undrinkable. Another 2% is locked in ice caps and glaciers. That leaves only 1% for our needs.



“Little drops of water /
Little grains of sand / Make
the mighty ocean / And the
beauteous land.”

- Julia A. Fletcher Carney

Landscape and Irrigation Design Courses

Free classes are offered to teach residents and professionals how to save water through proper landscape design, the use of California-friendly plants and more efficient irrigation.

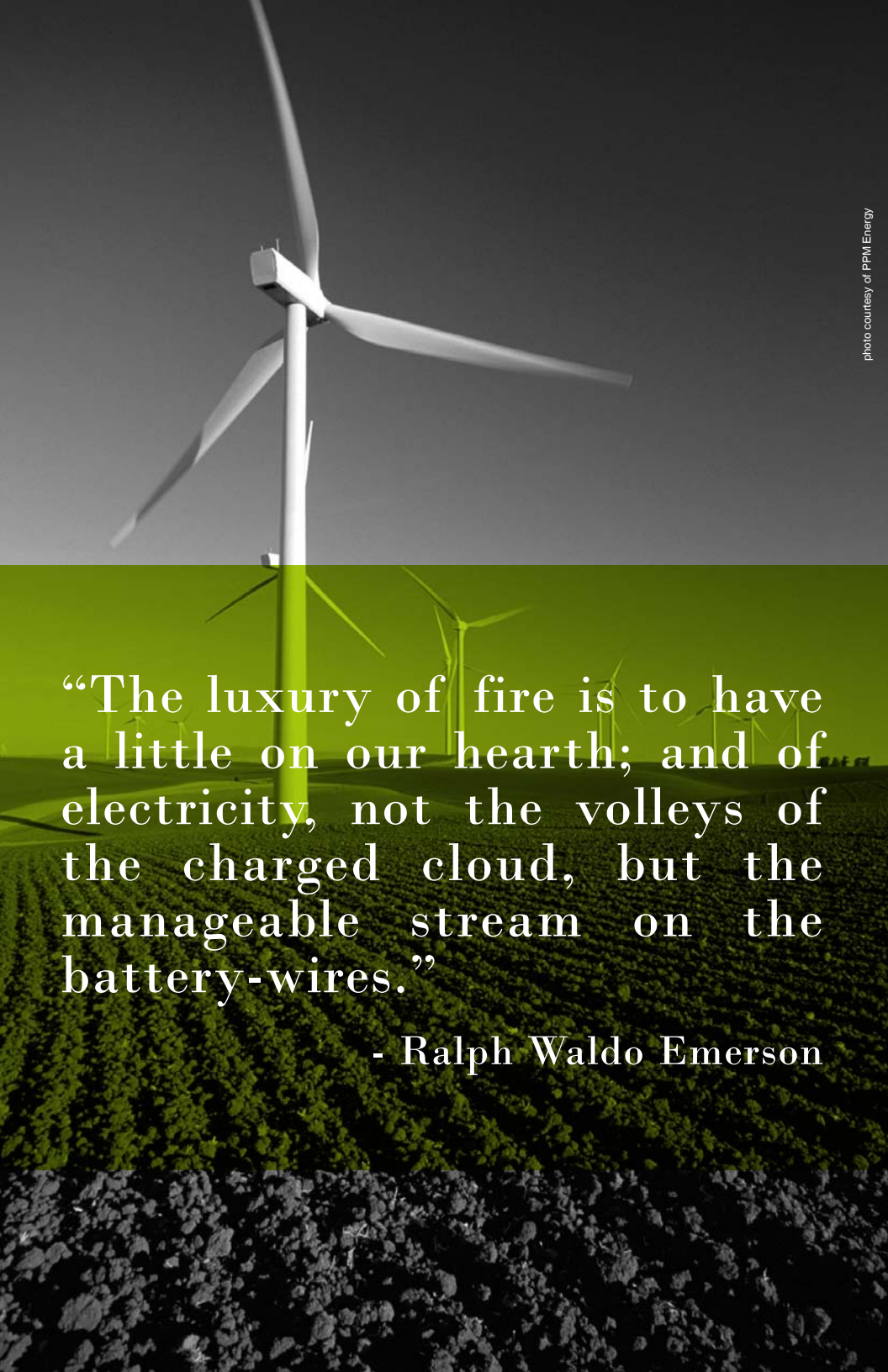
Pasadena continues to actively plan and also regulate water conservation. The Arroyo Seco Master Plan includes several provisions to enhance open space, streambeds and natural habitats as well as shift surface water underground as a viable water source. Measures

including the Standard Urban Water Mitigation Plan, which is required by law in order to prevent harmful substances from entering the storm drainage system at construction sites. To conduct a residential self audit, please visit www.h2ouse.com.

You can find out more about Pasadena's water conservation programs and rebates by visiting www.PWPweb.com or call the PWP AnswerLine at (626) 744-6970.

Interesting factoid:

Typically, at least 50% of the water that is consumed by households is used for outdoor irrigation.



“The luxury of fire is to have a little on our hearth; and of electricity, not the volleys of the charged cloud, but the manageable stream on the battery-wires.”

- Ralph Waldo Emerson

Conserving Pasadena's Energy

Saving energy in Pasadena homes and businesses starts with two simple steps: paying attention to our wasteful habits and using only what we need. Below are some programs and ideas that can help you conserve energy.

Energy Star® Rebate Program

If you are a Pasadena Water and Power residential electric customer, you may receive a rebate after purchasing a new Energy Star-certified ceiling fan, room air conditioner, refrigerator, hardwired lighting fixture, compact fluorescent light bulbs (CFLs) and fluorescent torchiere lamps.

All-Electric Household Rebates

For customers who live in all-electric homes, these additional items are eligible for rebates: energy-efficient heat pumps, dishwashers, clothes washers and programmable thermostats.

Home Energy Analyzer Survey

For tips on how to save money and energy, local residents can complete an energy analyzer survey online or on paper. Energy experts then analyze the answers and return free personalized reports.

Energy Evaluation

Small businesses can conduct energy and water evaluations online. PWP account managers are available to assist businesses with identifying opportunities for energy-saving measures.

Photovoltaic Demonstration Program

PWP's program shows electric customers how to use renewable energy resources including solar energy. City-sponsored solar panel installations and demonstration programs are located throughout Pasadena including Armory Center for the Arts, Pasadena High School and Lamanda Park Branch Library and are in the works at other locations. The solar panels projects will generate about 145,000 watts of clean, renewable energy.

Green Power

PWP customers can sign up for wind-generated green power for a minimum green power premium. Unlike electricity from fossil fuels, PWP's green power comes from renewable resources including wind and sun. To make green power available for its residential customers, Pasadena joined

Azusa, Anaheim, Colton and Glendale in an agreement to purchase green power from the High Winds Energy Center in Northern California. With its 328-foot-tall windmills, the state's largest wind farm produces 150 megawatts of power and is so far the largest project of its kind in California.

Light Sensors for Energy Efficiency

The City of Pasadena is installing nearly 2,000 interior light sensors in public restrooms, conference rooms and assembly rooms in many municipal buildings. Light sensors reduce annual energy costs by 10% and pave the way for more energy-efficient systems in public buildings.

Residential Photovoltaic Panels

Residential customers are eligible for a rebate of \$4 per watt (on the first 2,500 watts) of photovoltaic panels installed on their homes.

PWP Renewable Portfolio Standard (RPS)

PWP's commitment to green power is not simply for the here and now. Currently about 6% of PWP's total power supply comes from renewable energy sources. PWP has dedicated itself to increasing its green power to 10% of the overall supply by 2010 and 20% by 2017, a commitment with benefits that will pay dividends long into the future.

Leadership in Energy and Efficiency Design (LEED) Program

Commercial customers who pursue and achieve LEED certification can receive incentives from PWP at the following levels:

LEED Certified	\$15,000
LEED Silver	\$20,000
LEED Gold	\$25,000
LEED Platinum	\$30,000

Based on their level of LEED, customers may be eligible to apply for other incentives.

Residential Efficient Cooling Rebates

Rebates are available for central air conditioners (with a seasonal energy efficiency rating, or SEER, of 13 or higher), whole house fans, solar attic fans, Energy Star programmable thermostat, Energy Star skylight or light tubes and Energy Star dual-glazed windows.

Find out more about Pasadena's energy conservation programs and rebates - including special assistance for low-income, disabled and senior customers - and other energy programs by visiting www.PWPweb.com or call (626) 744-6970.



Preserving Pasadena's Urban Forest

Pasadena has 61,000 street trees, 25,000 park trees and 118,000 trees on private property. These trees bring splendor to Pasadena, provide shade to cool homes, stabilize the soil, absorb rainwater, slow down the wind and turn carbon dioxide into oxygen.

“I wonder about the trees
/ Why do we wish to bear /
Forever the noise of these
/ More than another noise / So
close to our dwelling place?”

- Henry David Thoreau

Tree Protection Ordinance

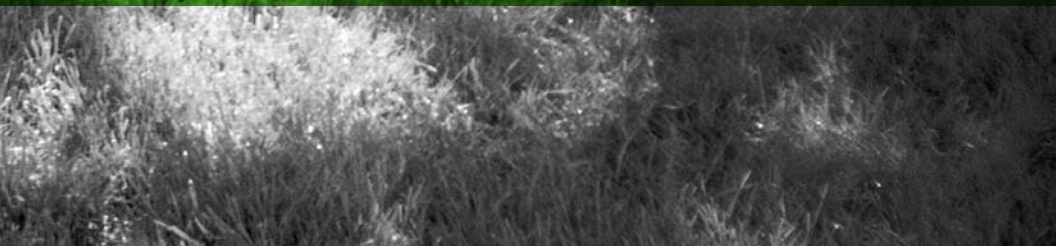
This municipal law protects four categories of trees - public, landmark, specimen and native - in specified locations. The City of Pasadena won't issue a permit for removal of a protected tree unless the tree threatens health and safety, suffers a verifiable condition affecting survival or is to be replaced with landscaping that increases the tree canopy, among other criteria. The ordinance spells out tree protection for commercial and residential construction projects. Some healthy, mature trees are invaluable so penalties for removal may be severe.

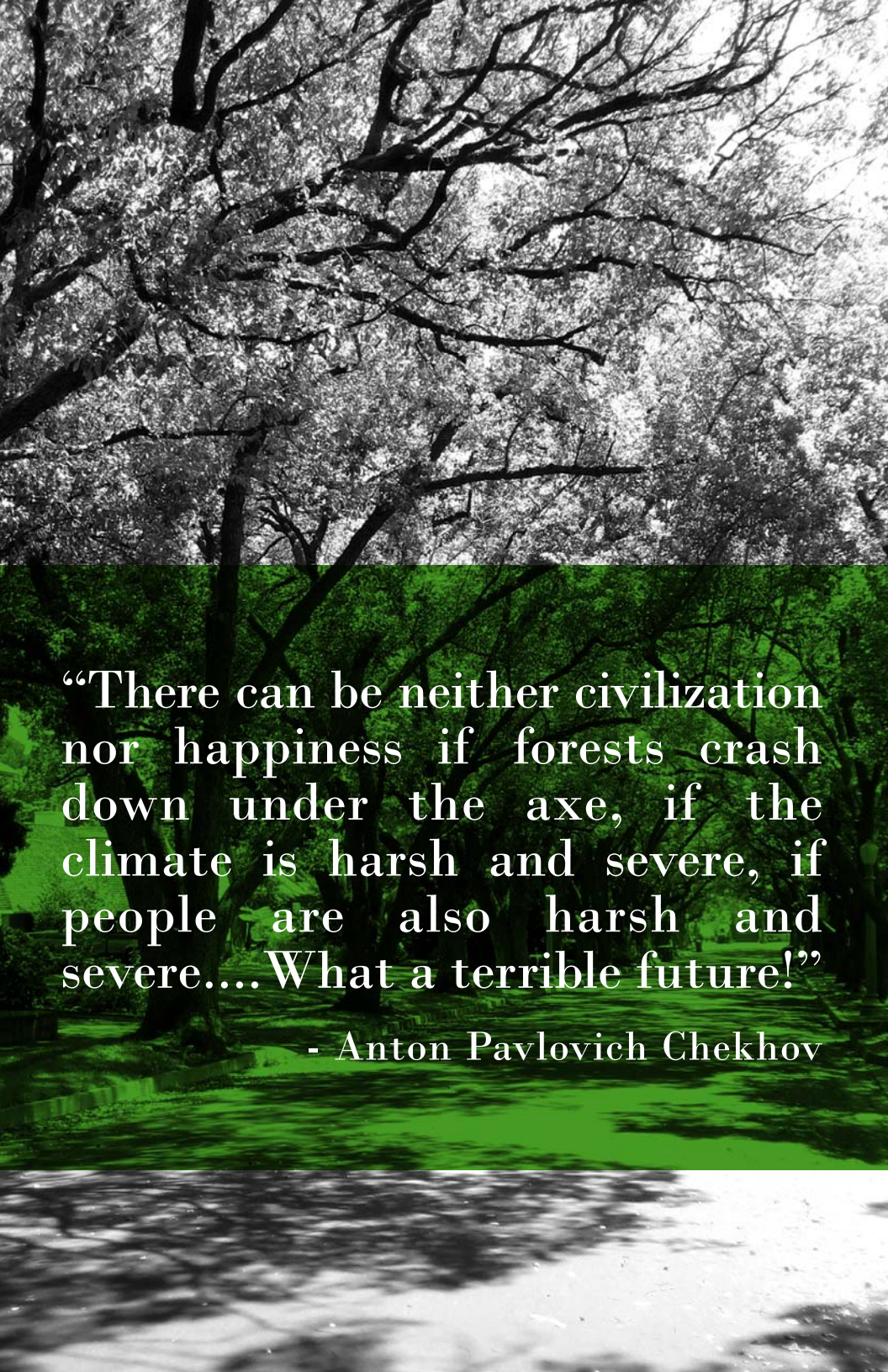
Tree Line USA

Pasadena Water and Power has been named a Tree Line USA utility three years in a row from the National Arbor Day Foundation for its careful pruning of trees near power lines by specially trained experts.

Interesting factoid:

In one year, an acre of trees absorbs the amount of carbon dioxide you produce when you drive your car 26,000 miles.



A large, leafy tree with a path leading through its branches. The tree is the central focus, with its branches spreading out and casting shadows on the path below. The path is a light color, possibly concrete or sand, and is flanked by green grass and other trees in the background. The overall scene is a lush, green forest setting.

“There can be neither civilization nor happiness if forests crash down under the axe, if the climate is harsh and severe, if people are also harsh and severe.... What a terrible future!”

- Anton Pavlovich Chekhov

Tree City USA

The National Arbor Day Foundation has named Pasadena a Tree City USA for several consecutive years for its many efforts to preserve the community's urban forest.

Cool Trees Program and Rebate

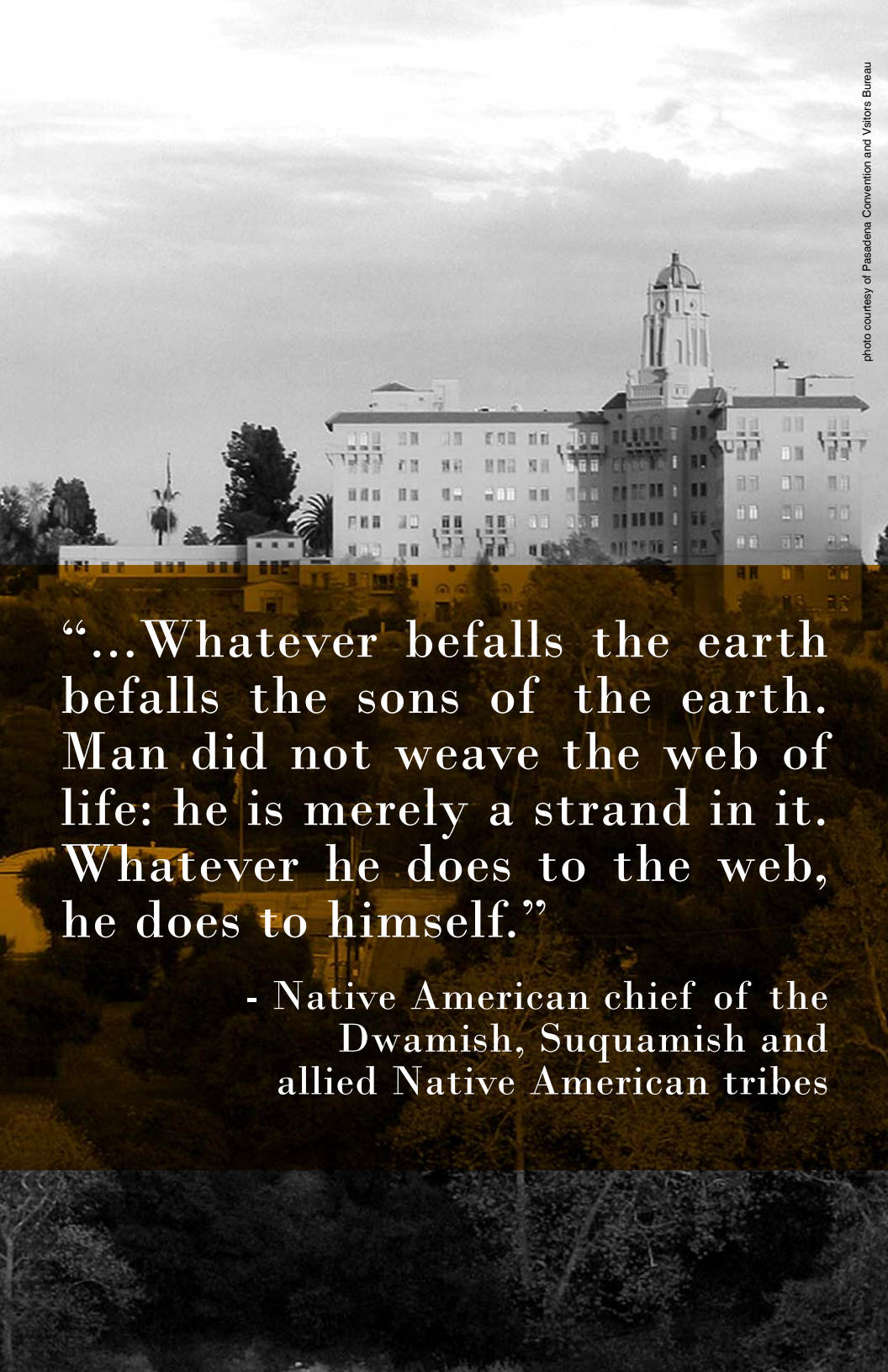
Do you want to plant a crape myrtle or western sycamore in your back yard? PWP's Cool Trees Program provides Pasadena residents with a guidebook on how to select, site and plant shade trees to reduce electricity bills. If properly placed, deciduous trees keep homes cooler in the summer months and warmer in winter. A rebate program allows residents to purchase and plant up to 10 five-gallon-size trees per year from an approved list. Rebates are up to \$50 per tree if purchased in Pasadena and up to \$40 per tree if purchased elsewhere.

For more information about tree protection, call (626) 744-4321 or visit www.cityofpasadena.net/publicworks.

For more information about the Cool Trees Program and Rebate, call (626) 744-6970 or visit www.PWPweb.com.

Interesting factoid:

One acre of healthy trees produces enough oxygen for 18 people per day.



“...Whatever befalls the earth
befalls the sons of the earth.
Man did not weave the web of
life: he is merely a strand in it.
Whatever he does to the web,
he does to himself.”

- Native American chief of the
Dwamish, Suquamish and
allied Native American tribes

Back to Earth in Pasadena

We need to reduce, reuse and recycle everything from soda bottles and magazines to yard trimmings and used motor oil. Recycling also helps Pasadena meet requirements set by California law (AB 939) for reducing the volume of trash that goes to the Scholl Canyon Landfill by 50%.

Household Hazardous Waste and E-Waste Roundups

Do you have old paint, household cleaners or other chemicals to throw away? Pasadena and Los Angeles County sponsor clean-up days at the Rose Bowl and other locations where residents deliver unwanted paint, paint thinner, pesticides, batteries, pool chemicals, motor oil and other hazardous materials for proper disposal. These events also accept household electronic waste including computers, televisions and cellular phones. Check for locations and hours at www.lacsd.org or call (888) CLEAN-LA.

Green Waste

What happens to the yard waste from your black lid container? Pasadena collects about 19,000 tons of green waste every year and hauls it to the Scholl Canyon Landfill. After processing, the green waste is used to cover the regular trash/waste at the landfill. The disposal rate for non-contaminated green waste is \$13.75 per ton as compared to \$33.77 per ton for mixed waste and contaminated green waste.

Interesting factoid:

Recycled glass generates 20% less air pollution and 50% less water pollution (NASA)

Residential Curbside Trash Collection/ Recycling Program

Recycling has become part of Pasadena's daily life. More than 11,400 tons of waste are recycled each year. Use your blue lid container for recyclables, black lid container for yard waste and green lid container for all non-recyclable trash.

Recycling Collection Programs

Pasadena is active in many recycling programs and issues: Recycling Made Easy to educate residents; Pay As You Throw to reward smart recyclers; construction and demolition recycling regulations to manage waste at construction sites; recycling centers for easy recycling; Earth Day/Arbor Day; Earth 9-1-1; Tree City USA; tree planting and composting; recycling Christmas trees, storm water runoff and watershed; Outstanding Recyclers Award recognition; and electronics recycling and hazardous materials disposal. Pasadena Water and Power has contracted with a private recycling company to collect and recycle old refrigerators; each PWP customer who recycles a refrigerator receives a \$50 rebate.

Business Waste Reduction Program

Pasadena surveys its commercial refuse accounts to appraise and promote recycling. In turn, each non-exclusive franchise hauler surveys its own customers on recycling, creates a recycling plan and develops outreach programs to educate customers.

Backyard Composting/Mulching

Composting your own yard waste will keep it out of the landfill and make your garden glorious. Back yard composting workshops are presented by the Department of Public Works and PWP. Compost bins are available at cost or free of charge for attendees of water-wise gardening workshops. Compost information is also available at city-sponsored functions such as Greening the Earth Day.

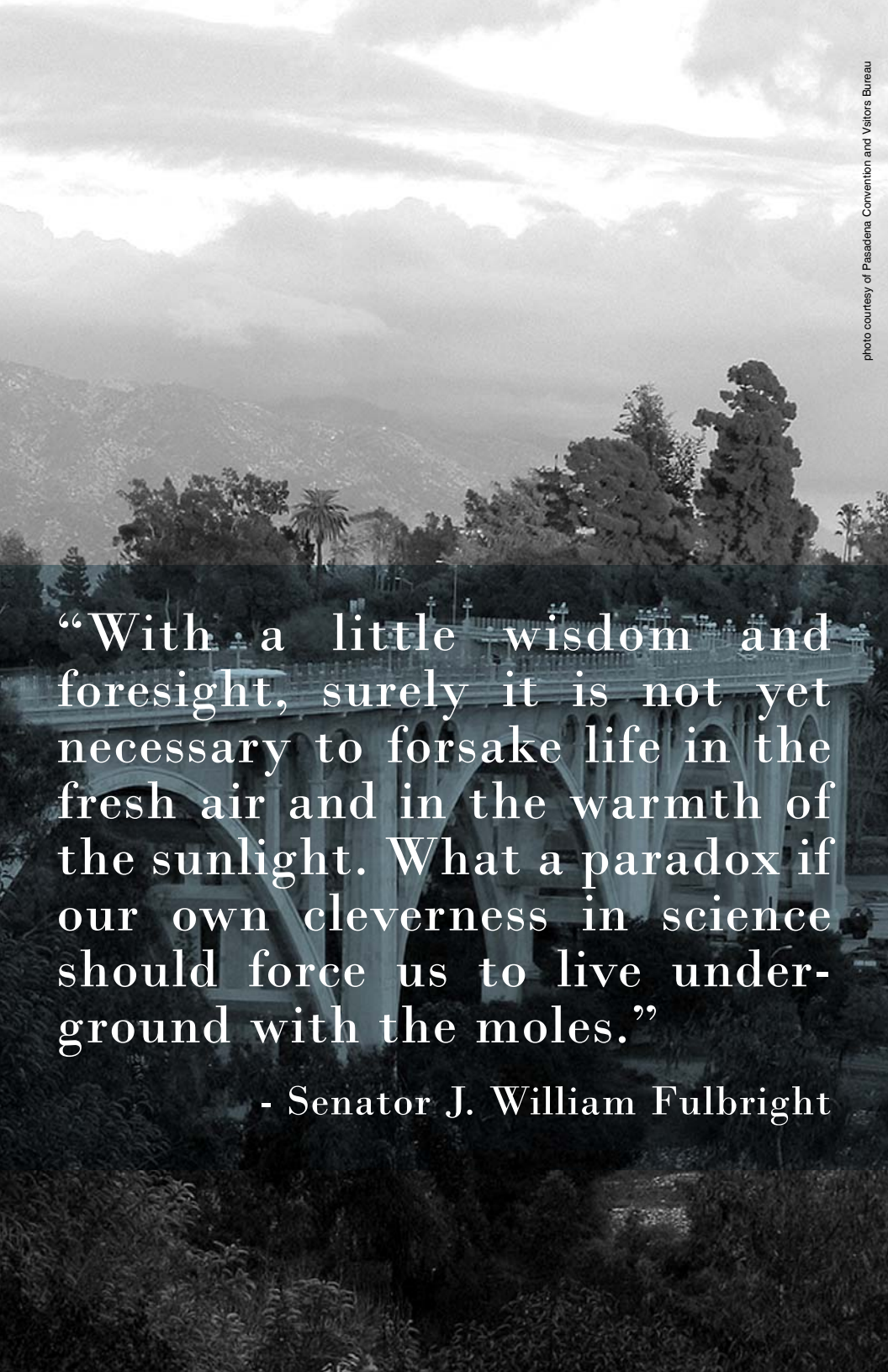
Recycling at City Hall

The City of Pasadena takes recycling very seriously in its many offices. A blue "We Recycle" container sits beside each employee's desk for on-the-job disposal of paper, aluminum cans and plastics. A larger recycling bin is seen in most conference rooms and lunchrooms. Employees are encouraged to print documents on both sides of paper and use recycled content paper whenever possible. The Internet contributes to an overall reduction in the vast amounts of information city government distributes on paper. Automated systems such as the Police Department and Fire Department Computer Aided Dispatch and Records Management System may also bring us closer to the paperless office.

Waste reduction workshops are available to all City of Pasadena departments by calling (626) 744-4721. Find out more information on Pasadena's trash and recycling programs at (626) 744-4087 or www.cityofpasadena.net/publicworks.

Interesting factoid:

If American households recycled just one out of ten plastic milk jugs they used, landfills would save 200 million pounds of space annually.



“With a little wisdom and foresight, surely it is not yet necessary to forsake life in the fresh air and in the warmth of the sunlight. What a paradox if our own cleverness in science should force us to live underground with the moles.”

- Senator J. William Fulbright

Breathing Easier on the Road

Each day people in American cities like Pasadena breathe air pollutants and greenhouse gases from buses, trucks, cars and other vehicles. To help clean up the smog, Pasadena is providing transportation alternatives to single-occupant cars.

PWP Hybrid Electric Vehicles

Pasadena Water and Power recently purchased seven hybrid electric vehicles (HEVs) to be used by utility meter readers. The HEVs are equipped with a gasoline/electric hybrid power train and emit about 90% fewer greenhouse gases than a typical new vehicle while getting nearly 50 miles per gallon of gas. The HEVs demonstrate our commitment to be an advocate and leader in environmental protection.

Pasadena ARTS Buses

To encourage you to leave the car behind, Pasadena Area Rapid Transit System (ARTS) buses provide service within our community and connect neighborhoods to business and activity centers. The ARTS buses also stop at or near Metro Gold Line stations. The routes have been expanded and five hybrid buses are in operation as part of the ARTS system. For more information call (626) 398-8973.

Interesting factoid:

Compared with just 10 years ago, America's largest cities are recording dramatically fewer days on which air pollution exceeds federal standards.

Metro Gold Line

The Metro Gold Line light rail system stretches from Pasadena to downtown Los Angeles with connections to many other light rail lines and bus lines as well as Metrolink and Amtrak at Union Station in downtown Los Angeles. The 13.7-mile Metro Gold Line has 13 stations including six in Pasadena. Trains operate every 10 minutes on weekdays during peak morning and afternoon rush hours, every 12 minutes during mid-day hours and every 20 minutes during late night hours. Transit buses connect to each station. For more information call (800) 266-6883.

Bicycling in Pasadena

To tempt you to get on your bike, 50 miles of Pasadena streets now have designated bikeways. The City of Pasadena's new Bike Map shows you exactly where to find all designated bike lanes and bike routes. 200 new bike racks have been installed throughout the city to serve Metro Gold Line stations, restaurants, retail shops and convenience stores. You've probably seen the Pasadena Police's bicycle patrol and its foot patrol in Old Pasadena on weekends.

Electric Vehicle Program

Electric vehicles (EV) are a symbol of clean air and efficient transportation. The City of Pasadena encourages residents and businesses to use EVs by helping install chargers throughout the city and gives advice to local businesses about the use of EVs. The City of Pasadena uses alternative fuel vehicles throughout its operations and leases EVs and hybrids for customer service, account management, meter reading, power troubleshooting and much more.

Energy-Efficient Traffic Flow

How many times have you seen pollutants coming from a car idling at a traffic light? The City of Pasadena is working to fight traffic congestion and the smog it generates. Smarter traffic signal lighting will reduce the energy consumption of traditional incandescent bulbs. That flashing all-red signal from midnight to early morning is also saving energy. Video detection systems and cameras improve mobility during traffic congestion at construction, accidents and special events at the Rose Bowl Stadium and along the Rose Parade route.

Ride Share Programs

Want to carpool? Pasadena already arranges ride-sharing for city employees who live near each other and work similar hours. Employees who drive alone pay a trip reduction fee, unlike workers who carpool or use public transit. City employees who choose to walk or bike to work have access to showers. The City of Pasadena gives subsidies to reward employees who use public transportation and offers technical assistance and support to businesses and organizations that want to develop comparable ride sharing programs. Pasadena's Trip Reduction Ordinance reduces car commuting by requiring major non-residential projects to have similar programs for alternate modes of transportation such as carpooling.

For more information about transportation programs, visit: www.cityofpasadena.net/transportation or call (626) 744-8747.

Interesting factoid:

Average global temperature has increased by almost 1°F over the past century; scientists expect it to increase an additional 2 - 6°F over the next one.