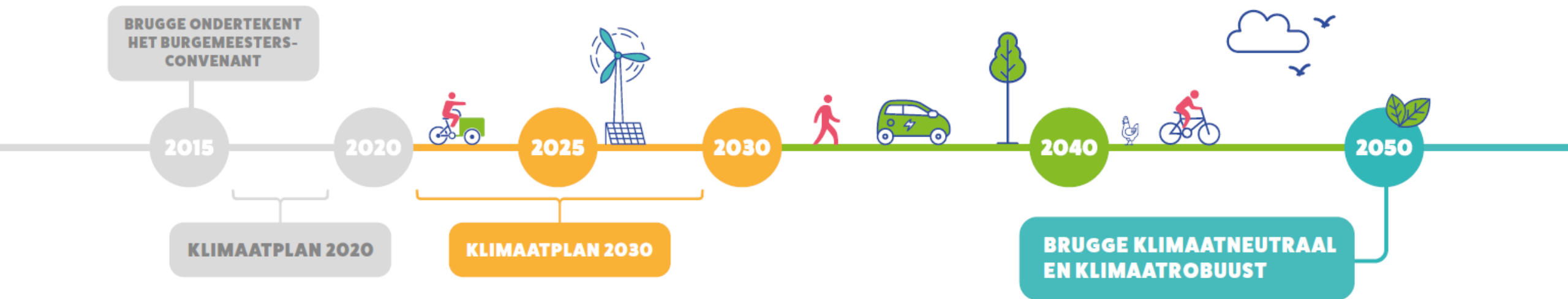


BruggeNaarMorgen

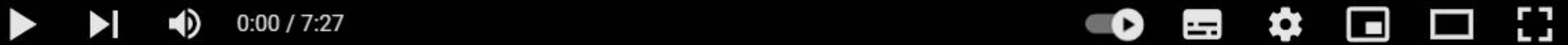
Samen zorgen voor een klimaatneutraal en -robuust Brugge



BRU
GGE

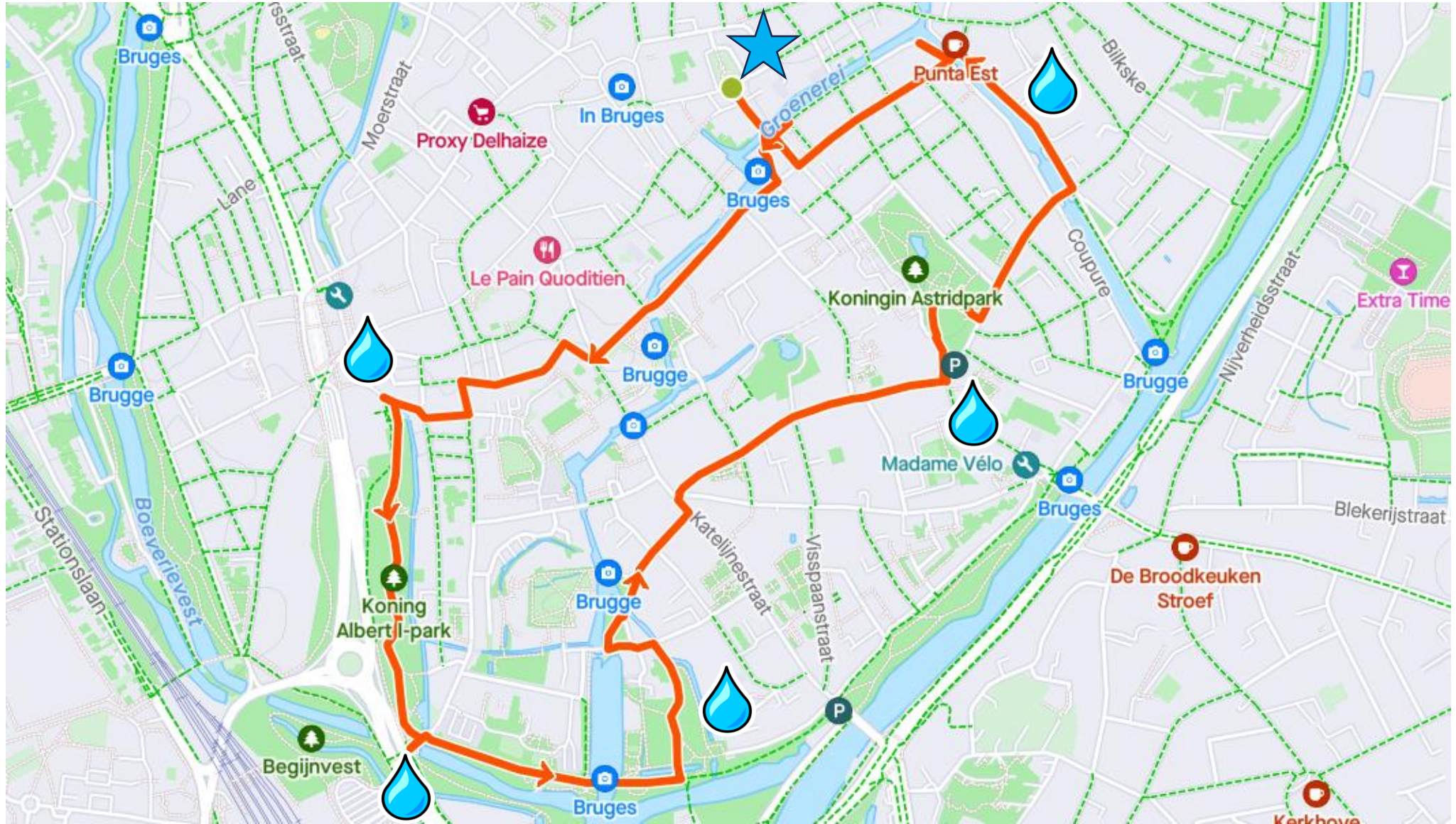


Afspelen (k)



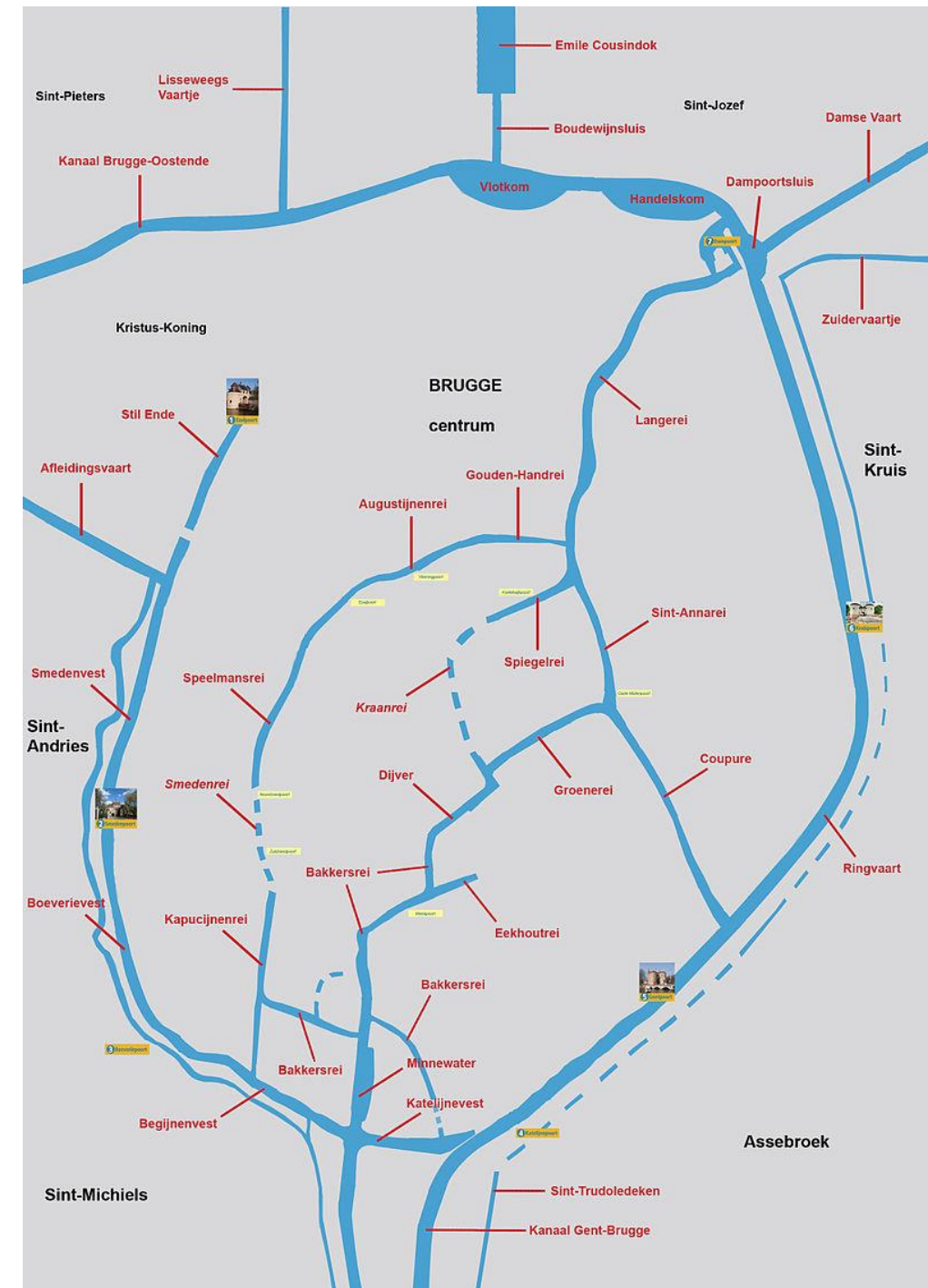
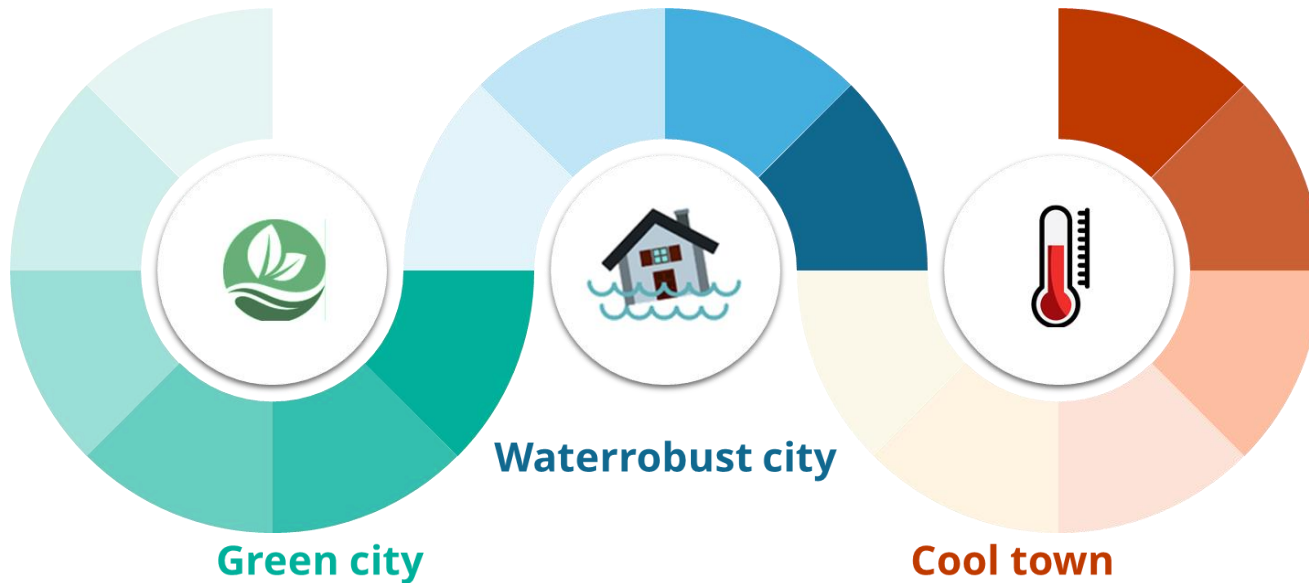
<https://www.youtube.com/watch?v=R6z6zyeVMTM>

City Tour: water!



Bruges = smart water city

- Rainwater and drought plan
- 10 steps towards clean “reitjes”
- Blue – Green City



Bruges = smart water city

Rainwater & drought plan

Objectives & strategy

completing and quantifying objectives for realizing measures



Rainwater axes
How can we safely drain excess water during extreme rain?

Reitjes as buffer

How can we use the canals as a buffer during extreme rain?



Actionplan
Define actions to implement and monitor the plan

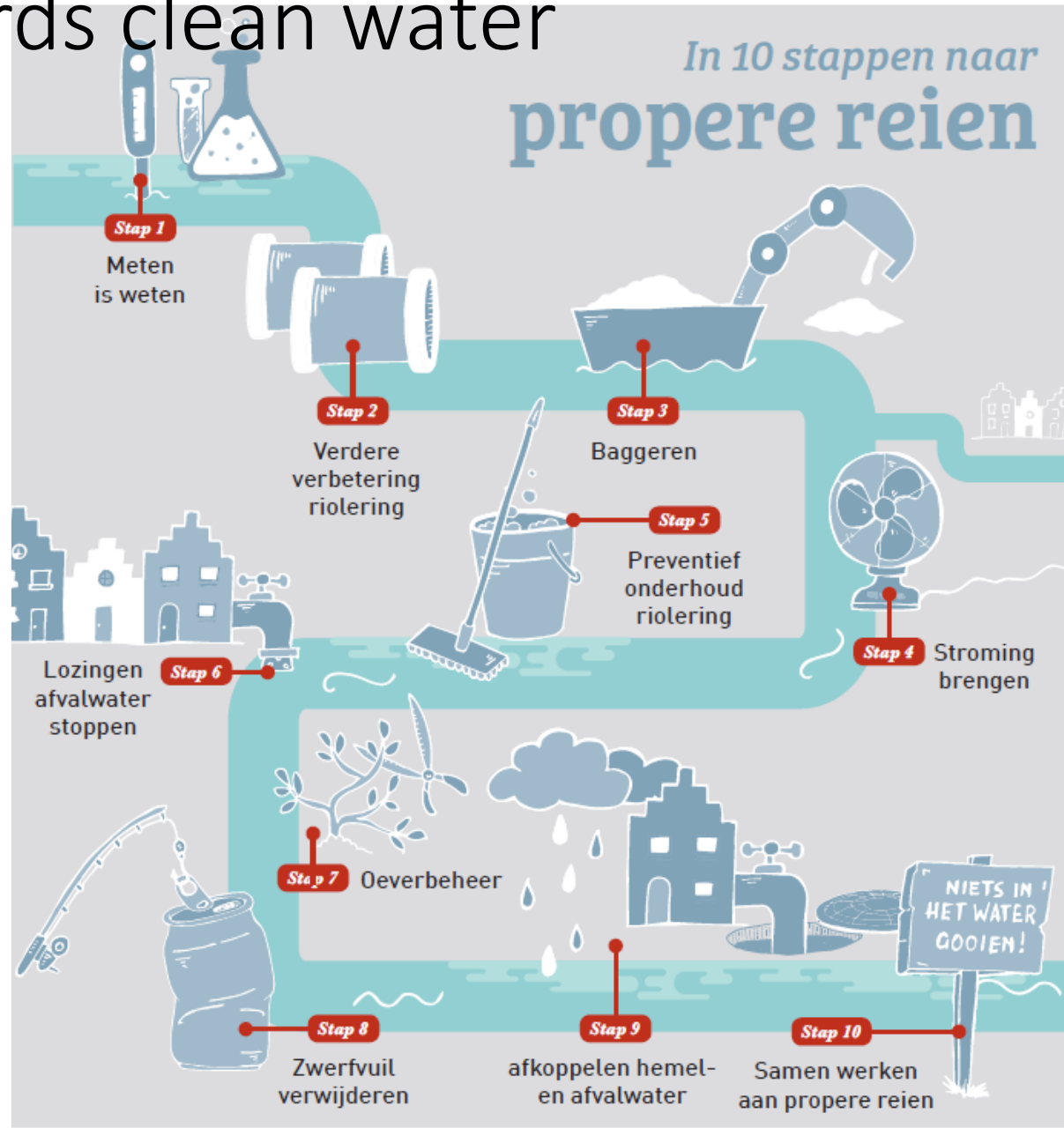
Participatory process

Collaborate with partners to achieve a supported and feasible plan



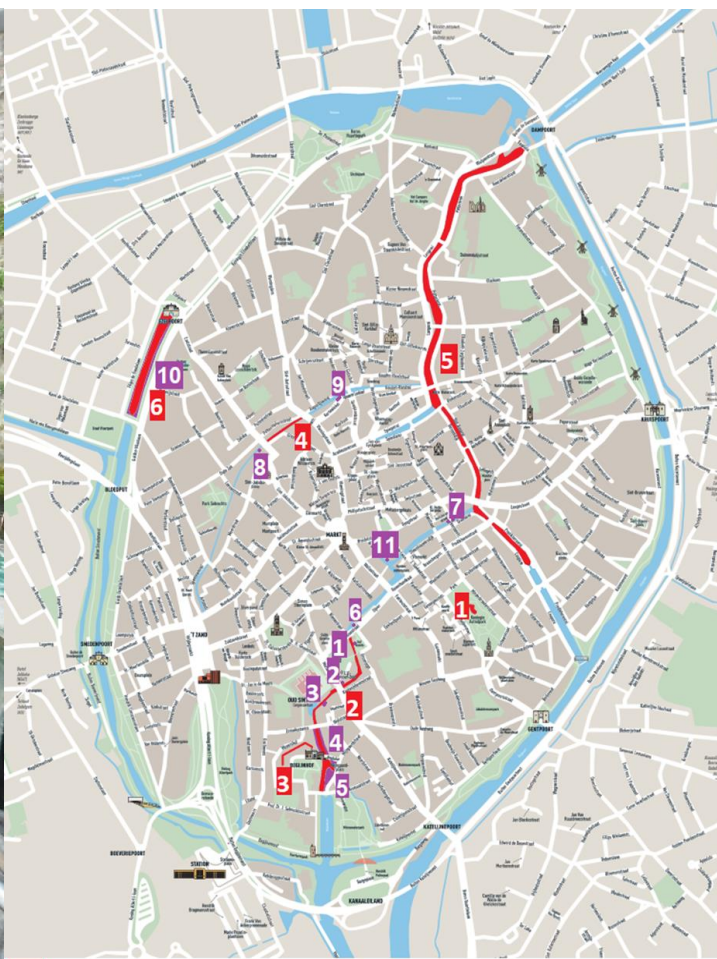
Bruges = smart water city

10 steps towards clean water



Step 3 – Dredging

Step 8 – Removing waste



Blue & Green City

- Blue and Green spaces in Bruges
- Removing grey spaces
- Reforestation
- Rediscovering Kerkebeek
- Opening Capucijnenrei



Blue & Green City – Green belts



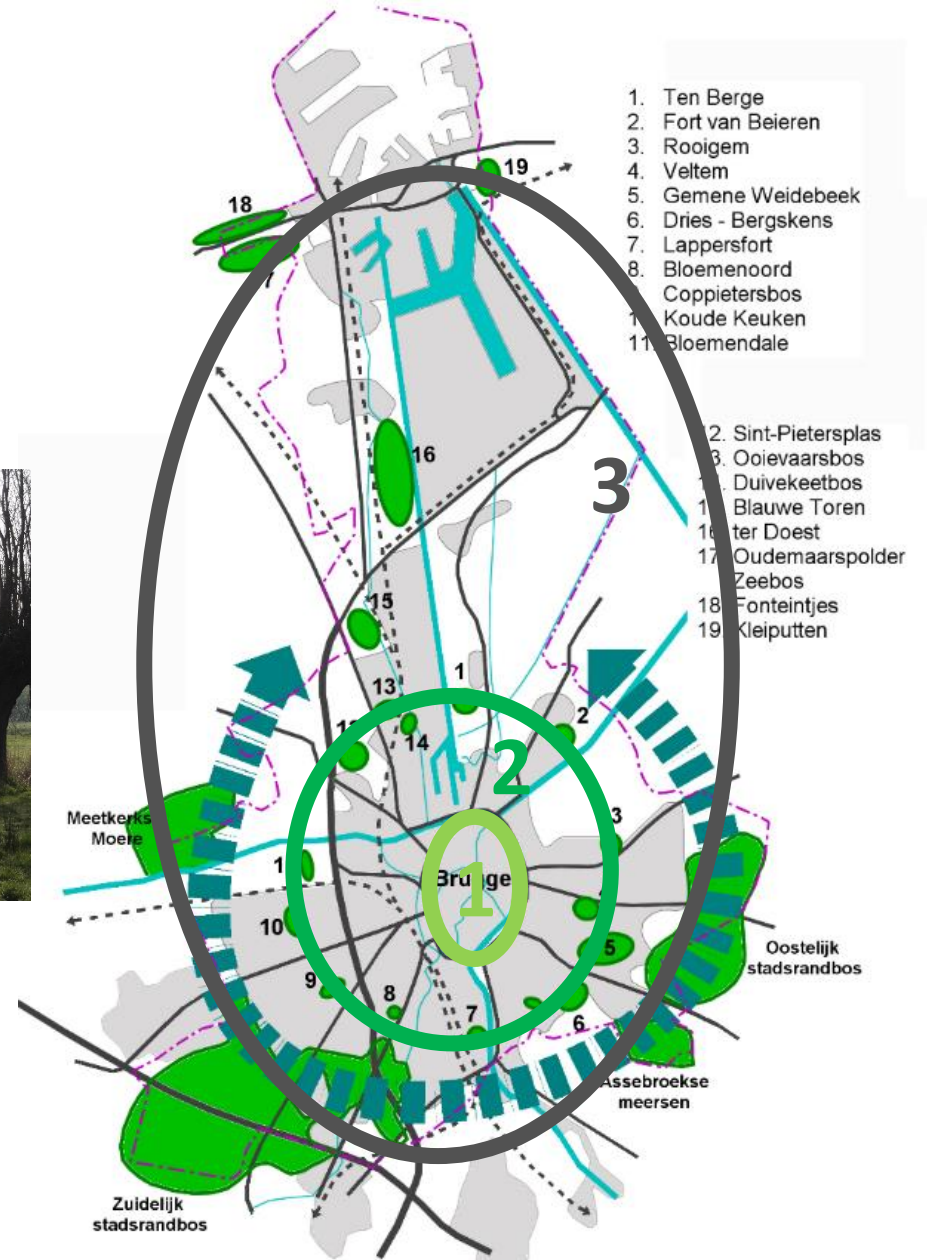
1



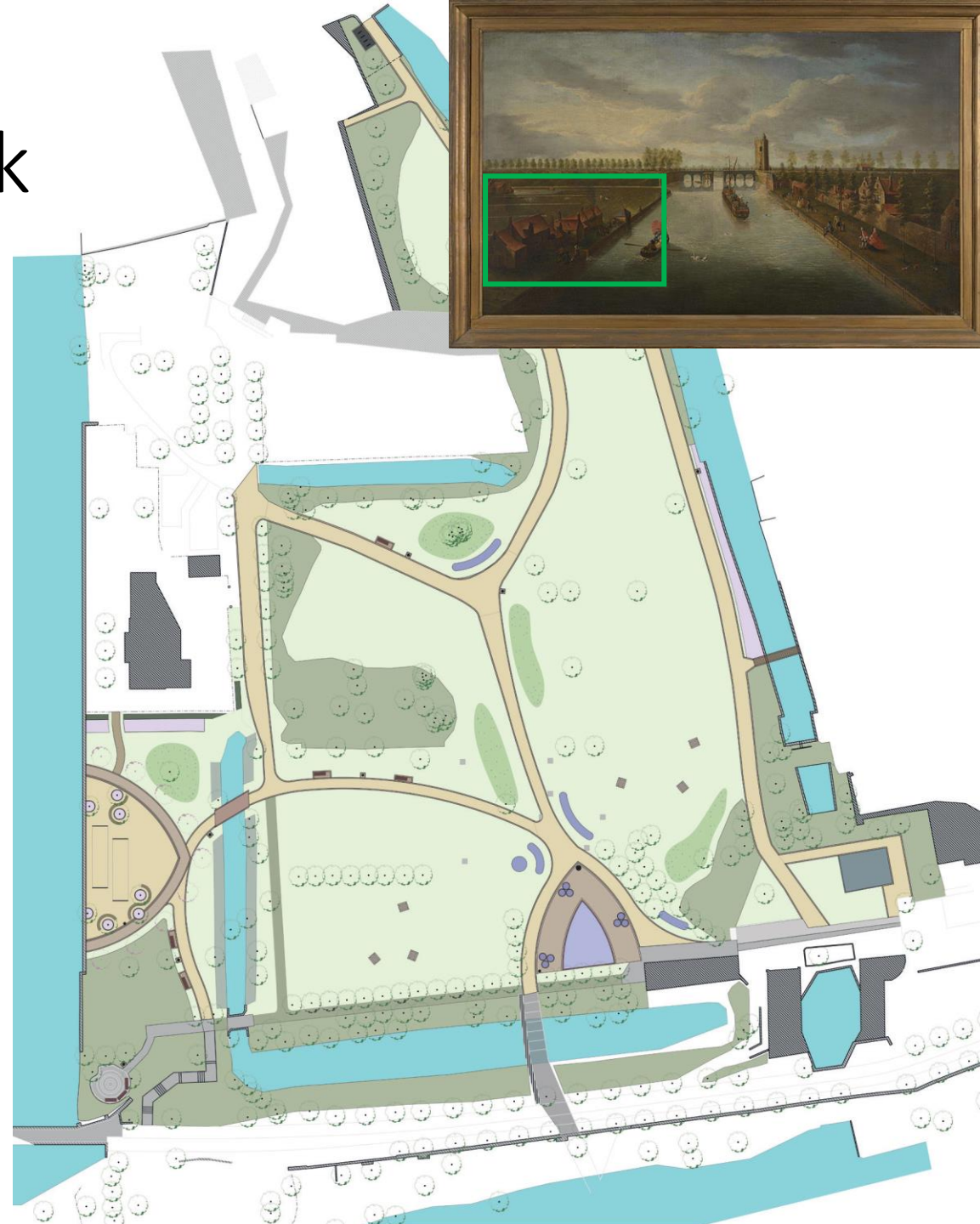
2



3



First circle Development of Minnewaterpark

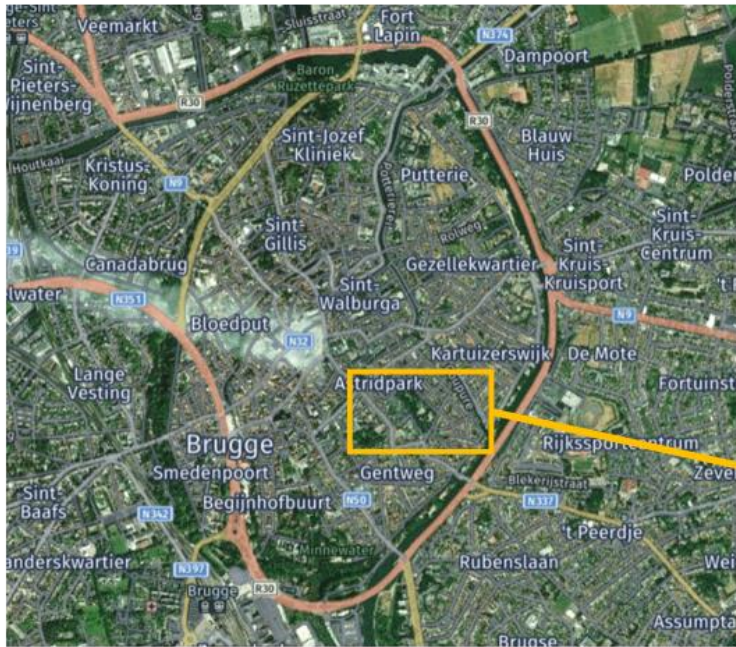


First circle

Astridpark – Blue Deal project

Ruimtelijke situering

Circulair watergebruik in het publiek domein: Geen druppel hemelwater onbenut



Luchtfoto 1: Binnenstad van Brugge



Luchtfoto 2: Magdalenakerk en omgeving



**BLUE
DEAL**

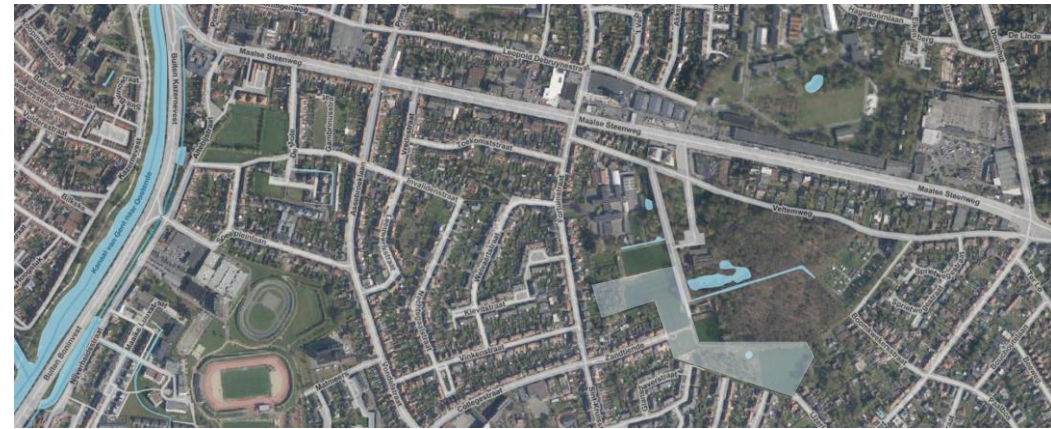


Vlaanderen
is water

First circle Development of Katelijne Park



Second circle: municipal parks Development of Parc Veltem



Third circle Forests and natural areas Extension of forest

BRUGGE OPENBAAR DOMEIN

PLANTFESTIVAL BEISBROEK

7-17 NOVEMBER '23

Draag je boompje bij

WWW.BRUGGE.BE/PLANTFESTIVAL



BRUGGE NATUUR CENTRUM BEISBROEK

Op stap in Beisbroek, Tudor & Chartreuzinnebos

Wandellussen

- Wandelpoelpad: 1,4 km
- Rondje Tudor: 2,4 km
- Boomgaardwandeling: 2,4 km
- Heidewandeling: 4,2 km
- Beisbroekwandeling: 6,2 km

Legende

- Bos
- Weide
- Boomgaard
- Heide
- Uitbreidingsgebied - Buiten
- MTB- en cultuurgpad
- Openbare weg
- Kastel Beisbroek Natuurcentrum / Cozima
- Infoborden
- Moreca
- Picknickbank
- Hondenlooppwede
- Vogelkijwade
- IJkeider
- Natuurmonument Bode Driehaer
- Doornik Buiten
- Doornik Binnen

natuurcentrum@brugge.be | 050 32 90 20

Rediscovering the Kerkebeek

Wijkpark Ten Boomgaard



LEGENDE

Kerkebeek

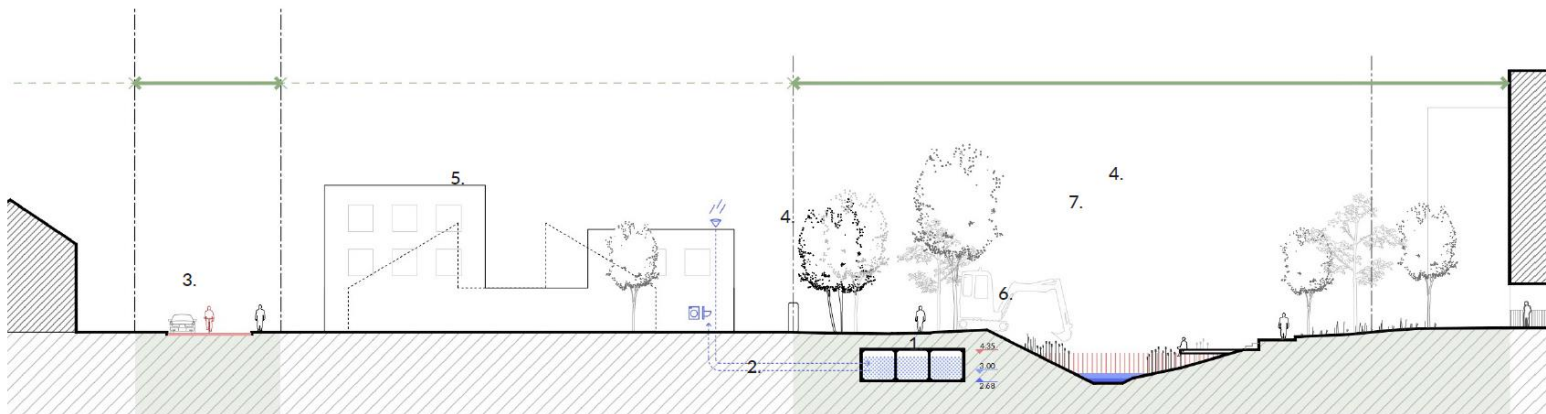
- █ Dijk - bestaande/ opvoering/parabeeltraal
- █ Waterpartij - gekoppeld aan beek
- █ Hoogtrekvlak linker (regio water)
- █ Zachte & ruisschilte oever
- █ Stedelijke oever
- █ Dijk oever
- █ Oekraan oever
- █ Koraal oever
- Opvaarders vlot/poel
- ↔ Water - verbod

Kerkebeekpad

- █ Kerkebeekpad
- █ Kerkebeekpad - talen/monnen
- █ Kerkebeekpad brug
- █ Kerkebeekpad fietsstraat
- █ Wandelweg
- █ Verbinding bestaand fietsnetwerk
- █ Fietsentalling

Kerkebeekpark

- █ Kerkebeekpark
- █ Moeras
- █ Beengraat
- █ Kerkebeekpark
- █ Groene parking
- █ Speelweelden
- █ (Her)ontwikkelingsproject



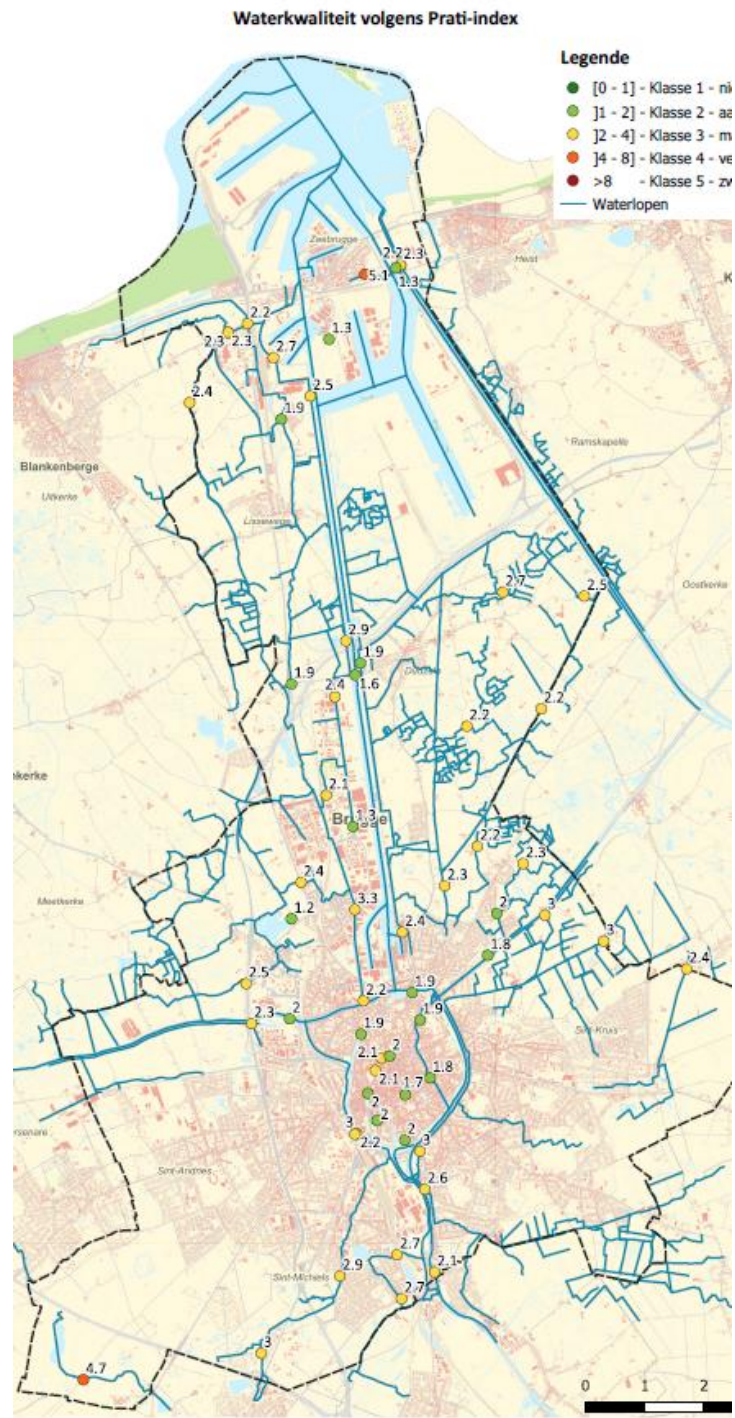
een kaderplan op middenlange termijn

Opening Capucijnenrei



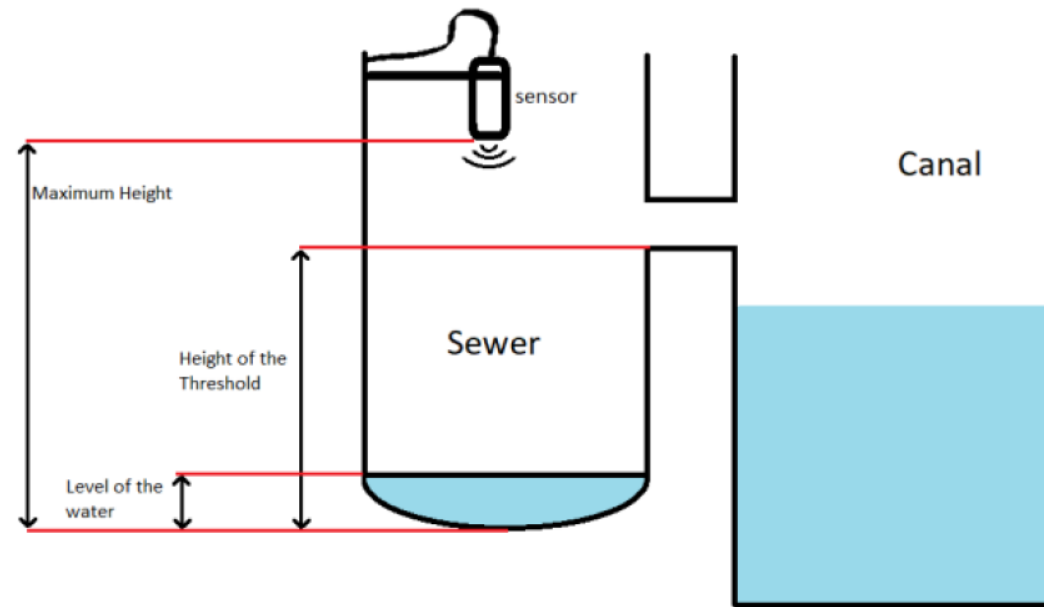
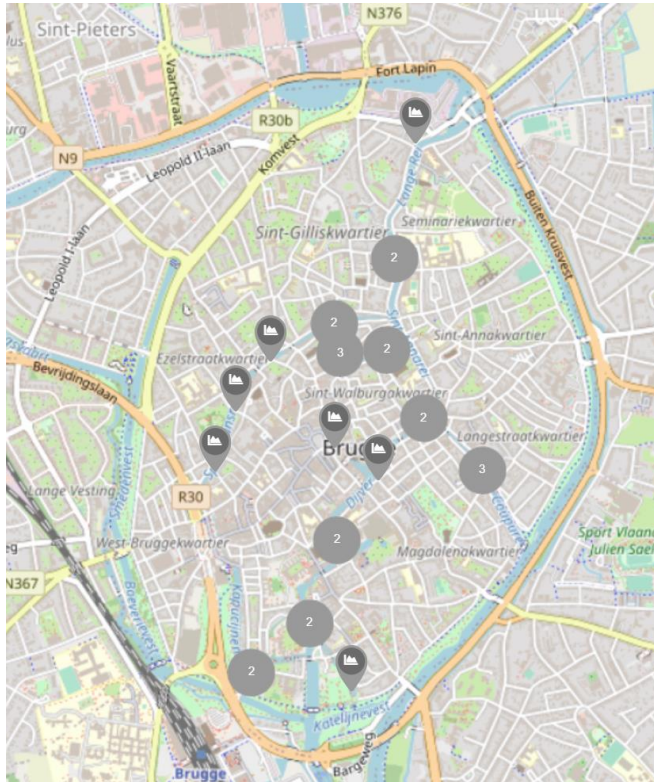
The Reien: from an open sewer to a recreational hotspot





Water quality measurements: online & offline

Sewer overflow sensors



Sewer overflow sensors

