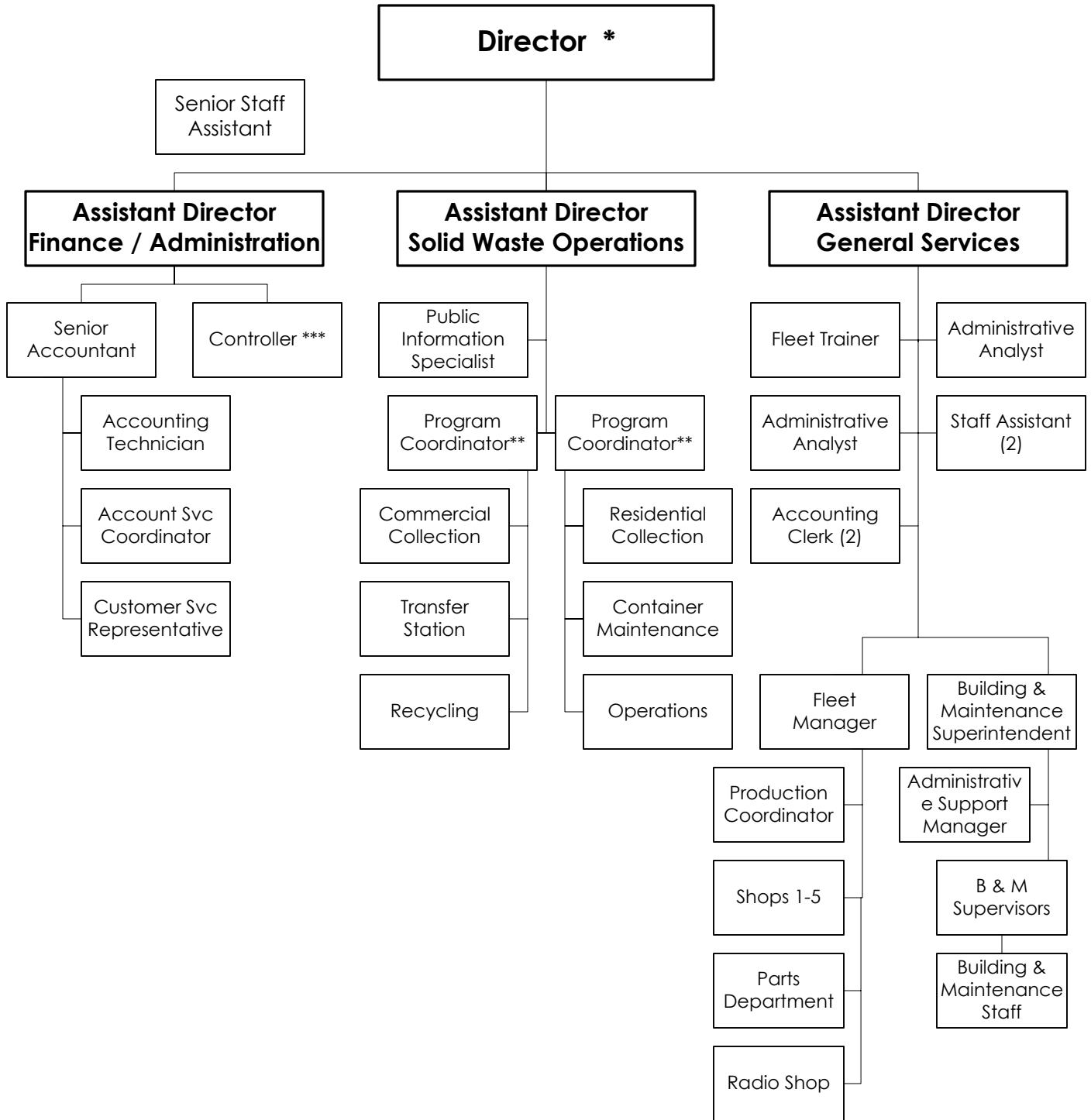


SOLID WASTE / GENERAL SERVICES



Solid Waste Fund Personnel - 107.5
 Recycling Fund Personnel - 23.5
 General Service Funds Personnel - 80.2

* Split between Solid Waste and General Svcs Funds
 ** Position counted in Solid Waste and Recycling Funds
 *** Position included in General Services Funds